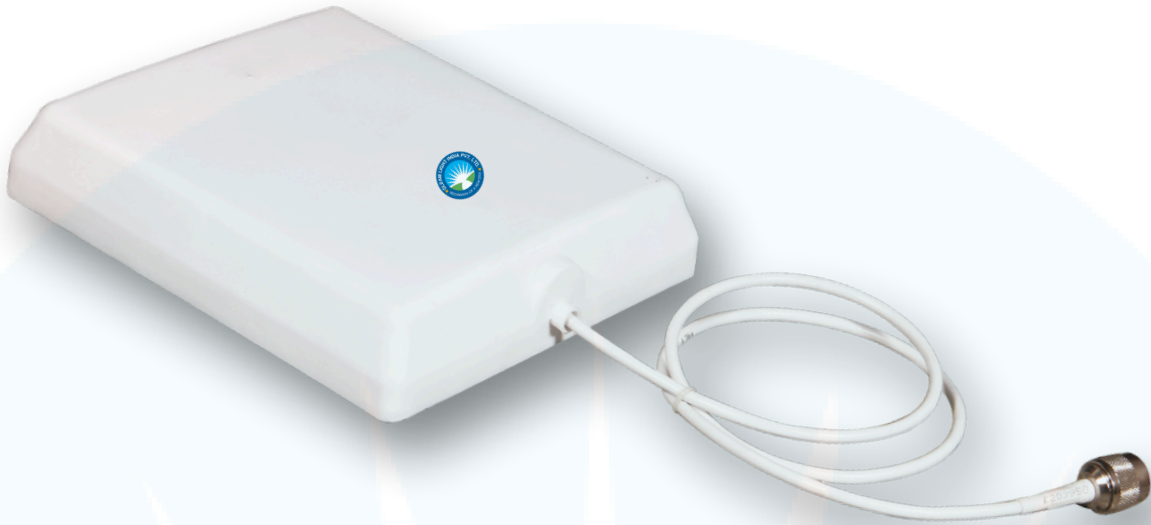


Patch Panel Antenna



An ISO 9001: 2015 Certified Company



Technical Specifications

Model No.	GLEAM-NMP10
Frequency Range	698-960/1710-2700 MHz
Polarization	Vertical
Gain	10/12 dBi
Horizontal Lobe width	360°
Vertical Lobe width	55°
Lightning Protection	DC Ground
VSWR	≤1.5
Maximum Input Power	100 W
Impedance	50 ohm
Connector Type	N Male/Customized
Operating Temp.	-40~+60 °C
Radome Material	ABS/PP
Radome Color	White
Cable	RG58(Pure Copper)
Cable Length	1 Meter/Customized
Weight	550 Gram
Brand	Gleam Light India
Compliances	CE compliant
ROSH	Compliant

CALL OR  **+91-8800386366**

Follow Us For More Updates [GLEAMLIGHTINDIA](#) /     

Info@gleamlightindia.com / www.gleamlightindia.in / www.gleamindia.com

GLEAM LIGHT INDIA PRIVATE LIMITED

12B Block -A, Behind Kanishka Garden, Amar Colony Main Rohtak Road Nangloi, New Delhi, Delhi 110041

